

APRON INSTRUCTIONS



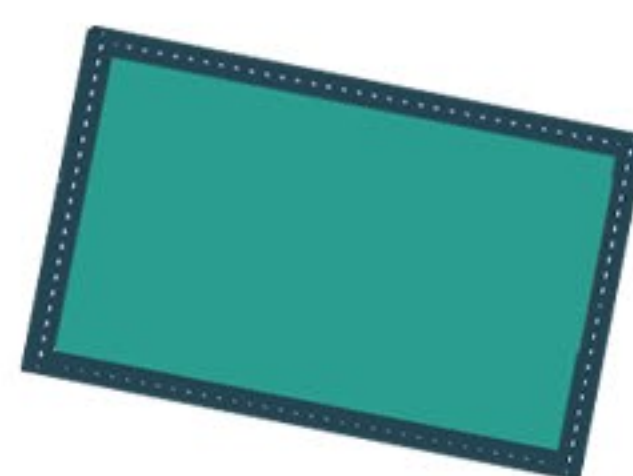
This apron is reversible and one-size-fits-all! We hope you make it out of different colors and patterns, play around with the pockets and love it!

CUT THE PATTERN



1. Cut all of the patterns. You will be cutting the same apron pattern from two fabrics of your choice. Choose different fabrics if you can since this apron is reversible!
2. For the pocket, you may choose to do either one pocket on a singular side or pockets on both sides. This should be a rectangle of 29.5 cm x 21.5 cm, or 11 ½ in x 8 ½ in.

PREPARE THE POCKETS



3. Mark the edges of the pocket(s) with a line 1.3 cm, or 1.2 in, away from all sides. Fold over and iron, if you have one! This will make sewing easier.
4. Sew all around, where you ironed.

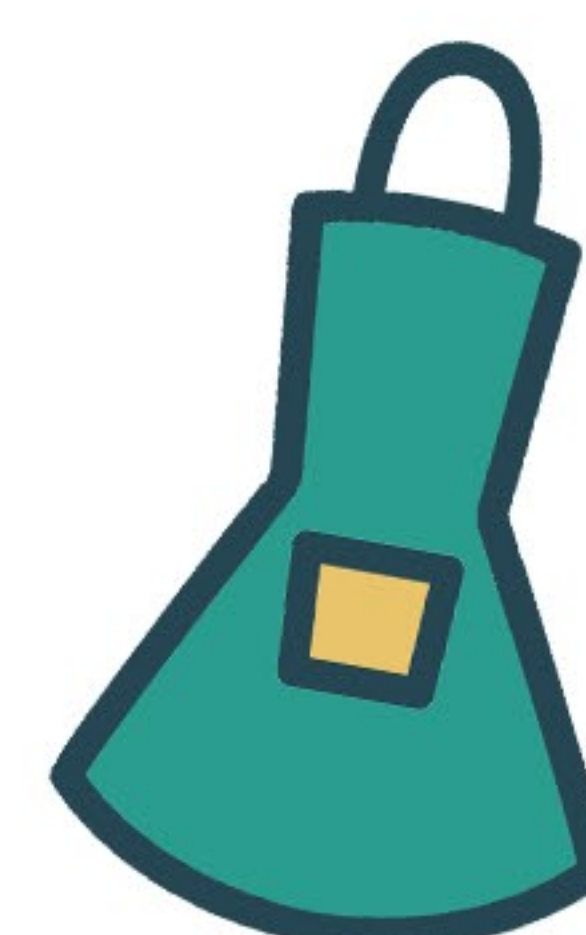
PREPARE THE STRAPS



5. Fold the straps halfway, lengthwise. Iron it if you can! Pin it, mark around with a line ½ cm, or ½ in, away from the edges and sew on 2 sides, leaving one of the short edges open.
6. Flip the straps around to have clean seams!

ATTACH POCKETS

7. Pin one pocket on the center of your fabric apron. If you chose to make two pockets, pin the other on the other apron pattern. It is important that the pocket is centered and straight.



8. Sew the pocket on 3 sides. Do not sew the top, as we need this to be left open for it to be a pocket! Remember to reverse. Repeat this step if you have a second pocket.

ATTACH STRAPS

9. Place one of your apron patterns right side up, with the pocket facing you. Pin the straps 2.5 cm, 1 in, (or 2 fingers!) from the edge, on the top of the apron. Sew the straps on.

SEW APRON

10. Place the apron with the straps right side up, with the pocket and straps facing you. Put your second apron pattern on top, with the pocket facing the table. You want the “pretty sides” to be facing each other.

11. Mark a line 1.3 cm, or ½ inch (or 1 finger!) away from the edge. This is the edge with the straps. Sew.

12. Mark all around the apron, at 1.3 cm, ½ in, or 1 finger away from the edge. Leave an opening on the bottom, about the size of your hand. You will not be sewing this part, you need it to be able to flip the apron over!

13. Pin and start sewing from the bottom. All of the extras you sewed, the straps and pocket(s), should be inside the two apron patterns.

14. Make sure to trim the edges, especially the corners! Make sure you do not cut your seam.

15. On the curves, you may cut slits just before your seam, to allow your fabric to turn easily.

16. Flip the apron, iron all around if you can and sew a topstitch all around the apron. A topstitch is about 0.6 cm, or ¼ in, away from the edge. The topstitch will close the opening you had left on the bottom.

CRISS-CROSS THE STRAPS

17. Criss cross one strap, where you attach the bottom of the strap to the opposite side of the apron. Pin and sew. Remember to reverse! Do the same for the next strap.

18. It's done!